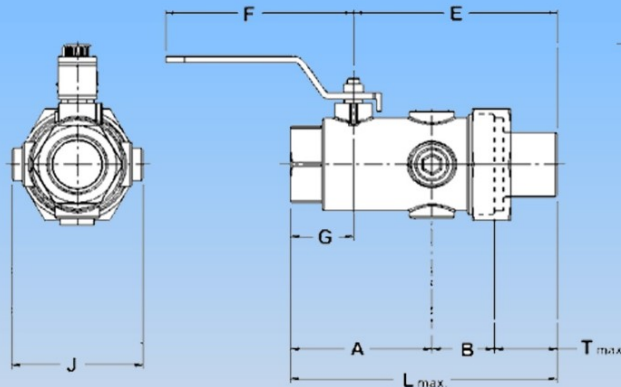


ACCESSORIES: UNION FULL PORT BALL VALVE WITH P/T



DIMENSIONS IN INCHES

Size	Part Number	A	B	E	F	G	J	T(max)	L(max)	Weight
1" FPT BBV W/UNION P/T	BV-IBU3FF	2.35	0.88	4.14	4.00	1.08	2.28	2.00	5.23	2.9lbs
1 1/4" FPT BBV W/UNION P/T	BV-IBU4FF	3.30	1.09	4.94	5.38	1.45	3.04	2.00	6.39	3.9lbs
1 1/2" FPT BBV W/UNION P/T	BV-IBU5FF	4.01	1.12	5.76	5.50	1.90	3.60	2.52	7.65	5.2lbs
2" FPT BBV W/UNION P/T	BV-IBU6FF	4.20	1.21	6.97	6.00	1.59	4.13	3.14	8.55	7.7lbs

UBV is a combination full port shut-off valve and union for use in HVAC systems.

CONSTRUCTION:

Body: Brass C37000

Ball: Chrome Plated

Ball Seal: Teflon

Stem: Explosion Proof

O-Rings: EPDM

Handle: Chrome Plated Steel w/ Plastic Cover

TAPS: Comes with 3 Total

MAXIMUM WORKING PRESSURE

400 PSIG

MAXIMUM OPERATING TEMPERATURE

-4°F (-20°C) to 250°F (121°C)



1/4" MPT P/T PLUG (BRASS)

N76-02

Valve Sizes and Dimensions (approx) in.
Call for availability of other sizes.



ALL THE "PUMP" YOU NEED AND MORE

1-866-646-6724

712-652-3424

www.bdmfginc.com